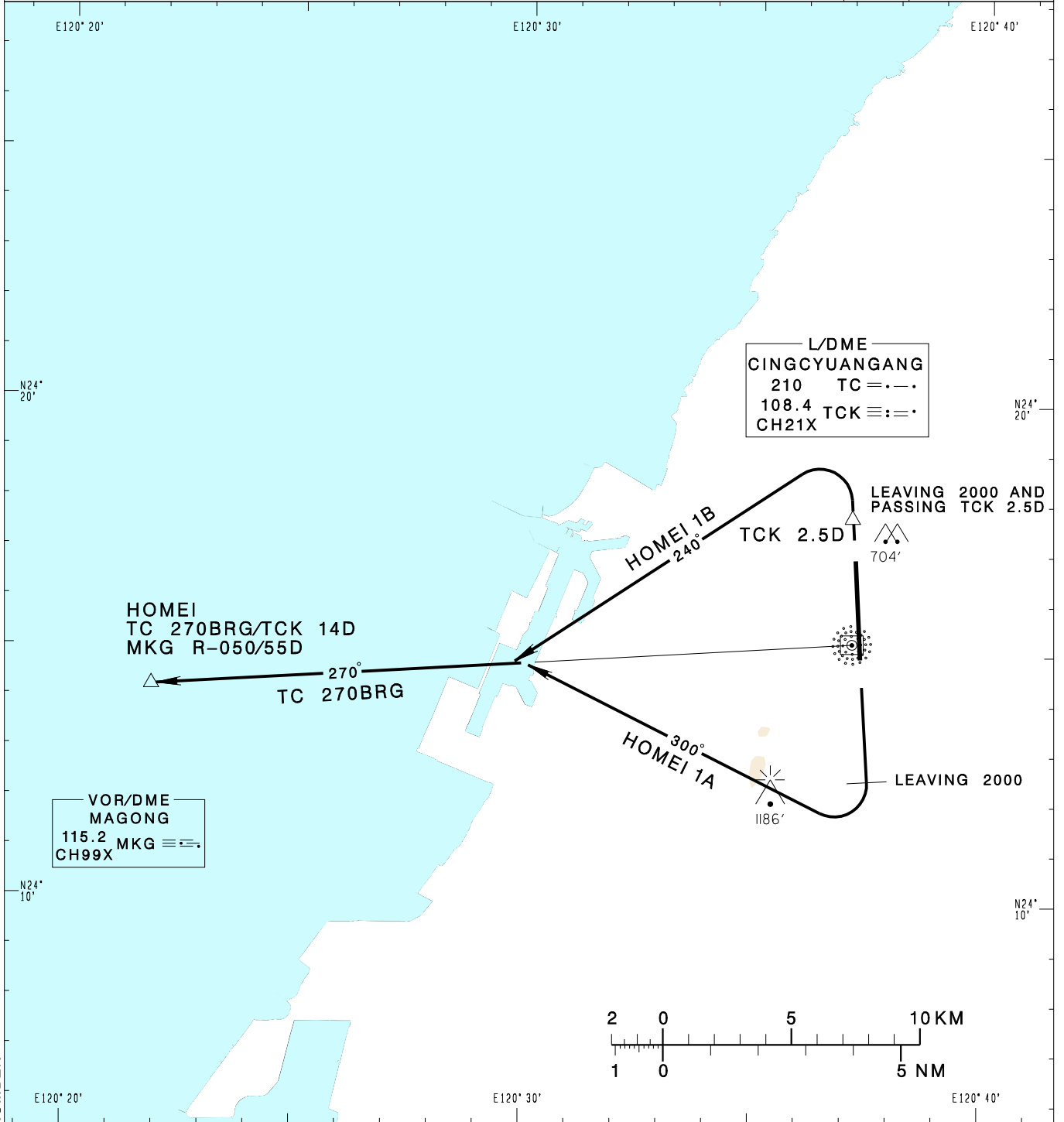


**臺中/清泉崗機場**  
**TAICHUNG/CINGCYUANGANG AD**

**RCMQ SID**  
**HOMEI 1A(RWY18)**  
**HOMEI 1B(RWY36)**

TAIPEI APP 130.1 129.6	TAICHUNG TWR 118.75 120.25	ATIS 127.75	VAR 4° W	
Apt Elev: 665'		Trans Level: FL130		
BEARINGS ARE MAGNETIC; DISTANCES ARE NAUTICAL MILES; ELEVATIONS, HEIGHTS IN FEET				



CHANGES: NEW PAGE NUMBER

**HOMEI ONE ALFA DEPARTURE**  
 Depart on RWY HDG until leaving 2,000, turn right HDG 300 to track TC 270BRG to HOMEI to join A1.

**HOMEI ONE BRAVO DEPARTURE**  
 Depart on RWY HDG until leaving 2,000 and passing TCK 2.5D, turn left HDG 240 to track TC 270BRG to HOMEI to join A1.

**Note:**  
 1. For RWY18/36: Requires a minimum climb gradient of 5% (300ft/NM) until 2000ft.  
 2. For RWY36: Caution close-in obstacles (trees) 704ft MSL, 150m northeast of DER.